

THE CALIFORNIA SPECIES OF MYZUS, WITH THE
DESCRIPTION OF A NEW SPECIES.

BY G. O. SHINJI, BERKELEY, CALIFORNIA.

The following species of *Myzus* have been collected by the writer in the vicinity of the University of California during 1915.

1. *M. cerasi* (Fabr.). Taken from curled leaves of cultivated cherry (*Prunus cerasus*) within sixty feet of the University of California campus.

2. *M. circumflexum* Buckton. Found on following plants: *Vinca major*, *Solanum tuberosum*, pansy, *Ceanothus* sp., *Stachys bullata*, *Plantago* sp., *Senecio nickanioides*, *Solanum nigrum*, *Fuchsia* sp., wall flower (*Cheiranthus cheeri*), lilies, iris, gladiolus, *Nasturtium* sp., water cress, foxtail, *Cerastium viscosum*, buck-eye (*Æsculus californica*), *Sisymbrium* sp., *Viola* sp., *Symphoricarpos racemosus*, Boston ivy, *Digitalis*.

3. *M. rosarum* Walk. Taken on wild and cultivated roses.

4. *M. rhamnii* Boyer. Taken from leaves, stems and berries of California coffee-berry tree (*Rhamnus californica*) and also *Cascara sagrada*.

5. *M. ribis* (L.). Collected from under side of leaves of wild gooseberry, University of California campus, April 10, 1915.

6. *M.* sp. This species will be named by Professor Essig. Host plant *Aquilegia vulgare* and *A. truncata*. Date of collection, April 20, 1915, Berkeley, and also May 20, 1915, Inverness, Marin County, California.

7. *Myzus godetiæ*, n. sp.

Alate viviparous female.—General colour light green. Length of body 1.6 mm. Width of abdomen .7 mm. Wing expansion 3.9 mm. Head broader than long, dusky, eyes dark red. Antennæ arising from prominent frontal tubercles, dusky. Length of antennal joints: III, .5 mm.; IV, .3 mm.; V, .2 mm.; VI, .1 mm.; Spur .4 mm. 10-12 sensoria on III. Prothorax dusky, broader than long, wider than head. Thorax dusky, width .7 mm. Legs with apical two-thirds and one-third of tibia dusky, remaining parts green. Abdomen green with large median dorsal patches or rows and also marginal dots of black. Cornicles dusky to black,

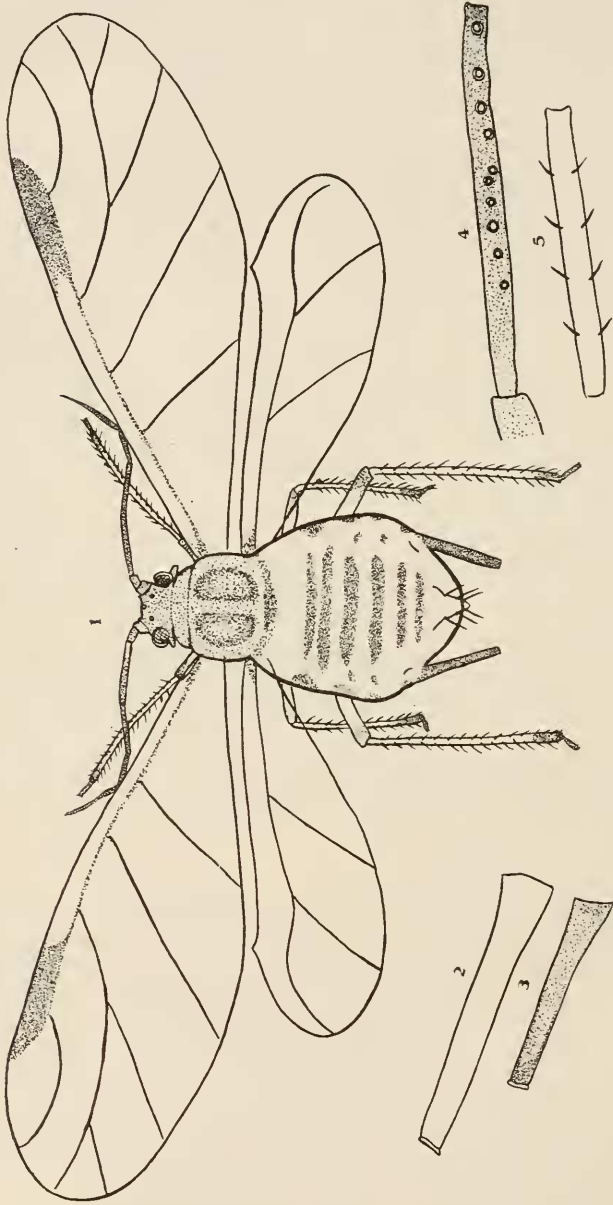


Fig. 4.—*Myzus godtteri*. 1, alate viviparous female; 2, cornicle of alate viviparous female; 3, cornicle of apterous viviparous female; 4, second and third antennal articles of alate viviparous female; 5, same of apterous viviparous individual.

.4 mm. long, decidedly tapering toward the distal end. Style somewhat conical, slightly dusky.

Apterous viviparous female.—General colour green. Length of body 1.6 mm. Width of abdomen .7 mm. Head green, broader than long. Eyes dark red. Antennæ situated on frontal tubercles, green with sixth including filament and also apical half of fifth, dusky. Rostrum beyond second coxa, tip dusky. Thorax and abdomen green. Legs green, with apices of tibia and tarsal joints dusky. Cornicles green, slightly swollen near apex, .5 mm. long. Cauda green, conical.

Host plant—*Godetia amœna* (Lehn.). Lilja?

Locality.—University of California campus, Berkeley, California.

Date of collection.—April 4, 1915.

A NEW SPECIES OF AMPHROPHORA FROM CALIFORNIA.

BY G. O. SHINJI, BERKELEY, CAL.

Amphrophora cicutæ n. sp.

Alate viviparous female.

Slightly smaller than *A. rubi* Kalt. General colour light green or pale. Length of body 3 mm. Width of abdomen 1.15 mm. Wing expansion 5.4 mm. Head pale, broader than long, width between the eyes .45 mm. Beak reaching second coxa, tip dusky. Antenna situated on prominent frontal tubercles, slightly dusky, more intensely so at the joints and apex of VI and spur. Length of antennal joints: III, 1.1 mm.; IV, .9 mm.; V, .64 mm.; VI, .25 mm.; spur 16 mm.; III with about 18 sensoria in a row. Prothorax with a small tubercle on each side, nearly as wide as head, broader than long, width .6 mm., slightly dusky, especially when viewed from side. Meso- and metathorax slightly dusky. Width of mesothorax .8 mm. Abdomen pale, with small, red spots scattered throughout. Legs moderately long, tarsi and apical portion of tibia dusky, the rest the colour of the body. Cornicles swollen beyond the middle, tip dusky, the rest the colour of the body. Length 1.1 mm. Style pale, .45 mm. long.